



# HP WallArt Suite



## JDF Workflow Integration

December 2015

HP WallArt Team



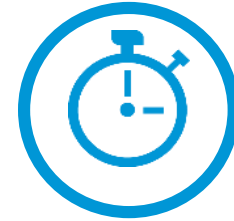
# Enabling JDF in HP WallArt Basic Concept

# JDF/RIP's Automation

## More efficiency on your workflow

How can it accelerate the process?

- 1 Sends ready-to-print files directly from your web2print
- 2 RIP automatically downloads your files, without manual interaction



## AUTOMATIC PROCESS



HP WallArt Web2Print



File Ripping



Printing

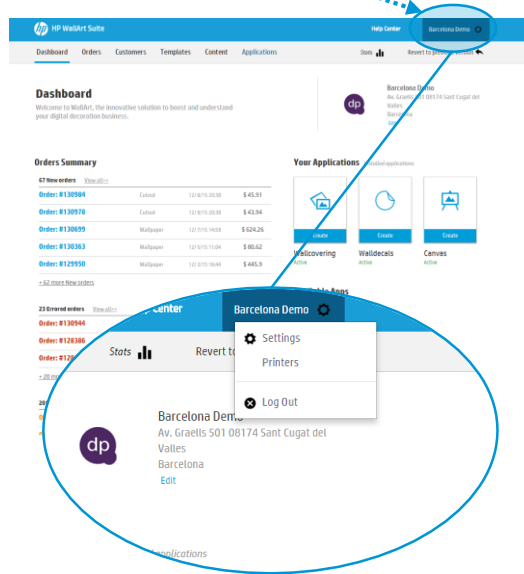


# Enabling JDF in HP WallArt

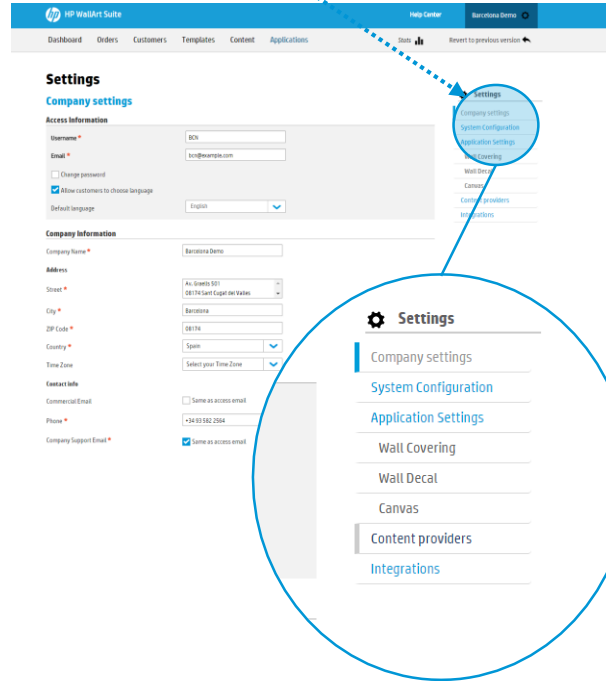
## How it works

# Enter Workflow Integration settings

1 Click on  Settings

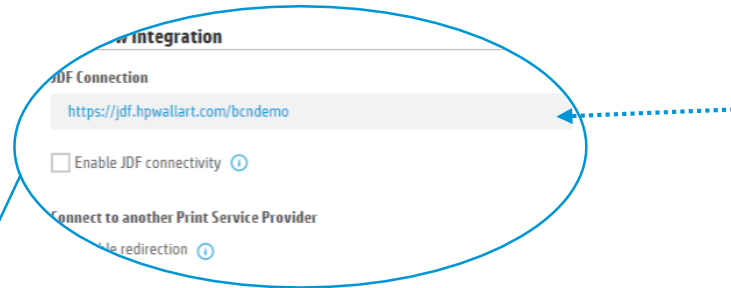


2 Click on [System Configuration](#)



# Configure JDF Connection settings

3 Scroll down to Workflow Integration. There you will find the JDF Integration options.



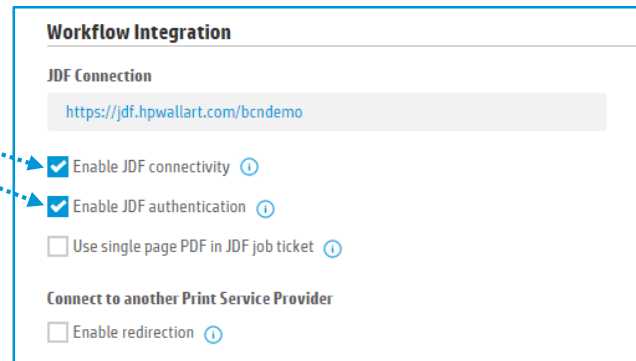
Note this personalized URL. You will need it in further steps to configure your RIP.



# Configure JDF Connection settings

- 4 Click to check the “Enable JDF connectivity”, and ensure that “Enable JDF authentication” is also checked.

Configure any additional options, if needed.



**Workflow Integration**

**JDF Connection**

<https://jdf.hpwallart.com/bcndemo>

Enable JDF connectivity ⓘ

Enable JDF authentication ⓘ

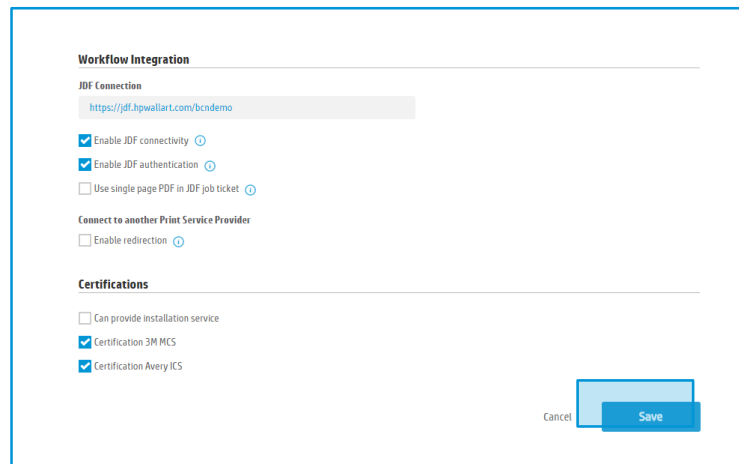
Use single page PDF in JDF job ticket ⓘ

**Connect to another Print Service Provider**

Enable redirection ⓘ

# Configure JDF Connection settings

- 5 Remember to save any changes clicking the **Save** button.



The screenshot shows a configuration window titled "Workflow Integration". Under the "JDF Connection" section, there is a text input field containing the URL "https://jdf.hpwallart.com/bcadmino". Below this are three checkboxes: "Enable JDF connectivity" (checked), "Enable JDF authentication" (checked), and "Use single page PDF in JDF job ticket" (unchecked). The "Connect to another Print Service Provider" section has one checkbox: "Enable redirection" (unchecked). The "Certifications" section has three checkboxes: "Can provide installation service" (unchecked), "Certification 3M MCS" (checked), and "Certification Avery ICS" (checked). At the bottom right, there are two buttons: "Cancel" and "Save".

In the next steps, you will setup your RIP.





# HP WallArt Set up in

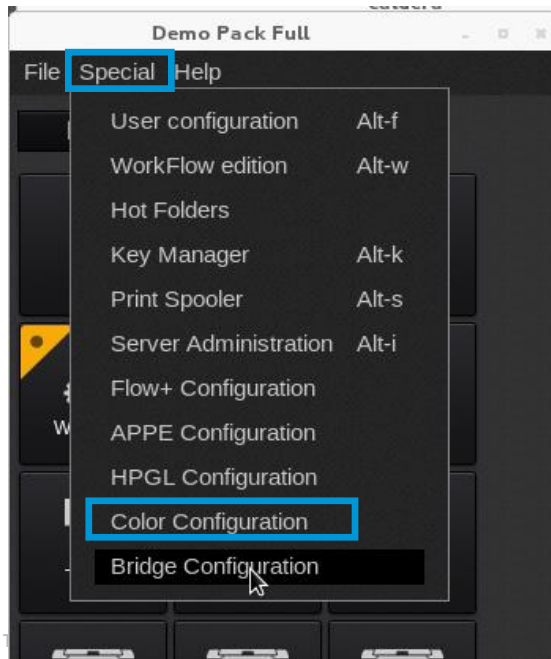
Only for Caldera Version 10



# Set up HP WallArt in Caldera RIP

## Only for Caldera Version 10

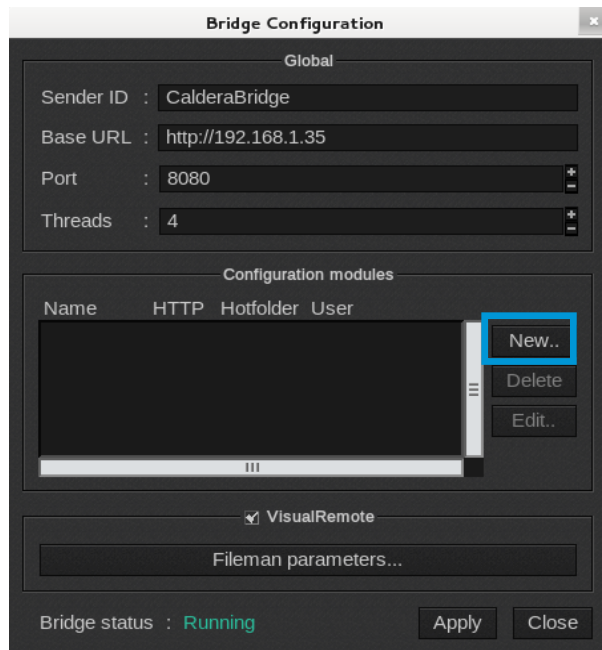
- 1 **Note:** You need to have a Bridge-enabled key license. Configure CALDERA Bridge in order to use HP WallArt in CALDERA RIP in [Special > Bridge Configuration](#) Menu



# Set up HP WallArt in Caldera RIP

Only for Caldera Version 10

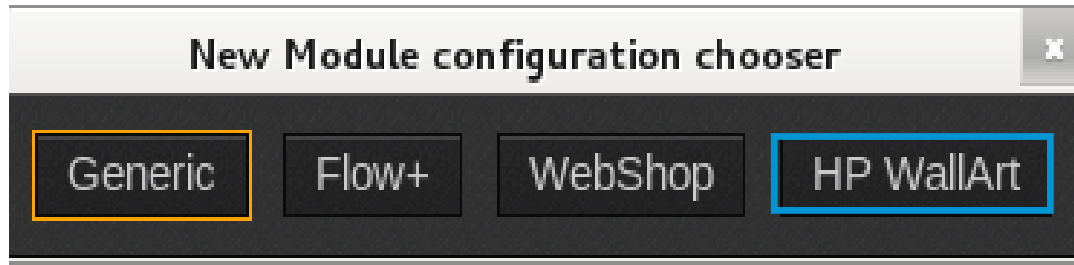
- 2 Create a new configuration module



# Set up HP WallArt in Caldera RIP

Only for Caldera Version 10

- 3 Select HP WallArt type



# Set up HP WallArt in Caldera RIP

Only for Caldera Version 10

4 Fill in the required fields

Bridge Module Configuration

Name : HP WallArt Queue

Image bar tab : Current

Send to : None

JDF Link URL : https://jdf.hpwallart.com/xxx

User : Caldera

Hold incoming jobs

Fileman parameters...

Job types

WallCovering  WallPoster

Canvas  WallDecal

Use authentication

User login : UserName

Password : Password

HP WallArt

OK Cancel

## Settings

### Workflow integration

#### JDF connection

https://jdf.hpwallart.com/my\_id

Enable JDF connectivity

Order callback url

Enable order callback

URL identifier \*

url\_identifier

URL identifier is available

Shows your company name into the URL when your apps are open

## Settings

### Web integration

These are the resources needed for you to integrate the HP Applications Center into an external website.

API Key

Need to know more? Go to developers page

#### External link

External links allow you to add a link to your website that will open HP Applications Center applications in a new browser window that is external to your website. After an order is placed you can redirect HP Applications Center applications back to your website. See below for configuration options.

## Settings

Company settings

Printers & RIP

System configuration

Workflow Integration

Application settings

Common Setting

Tablet application

Content providers

Web integration

Version Settings

## Settings

Company settings

Printers & RIP

System configuration

Workflow integration

Application settings

Tablet application

Content providers

Web integration

Version Settings

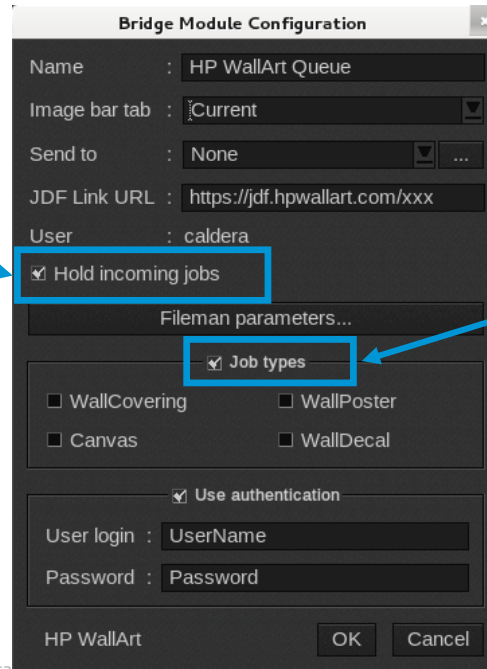
# Set up HP WallArt in Caldera RIP



Only for Caldera Version 10

## 4 Bridge Module Configuration set ups

Disable “Hold incoming jobs” if you want to open the images in Caldera automatically. With this option set on you will have to use the “Open in RIP” button in JobTracker



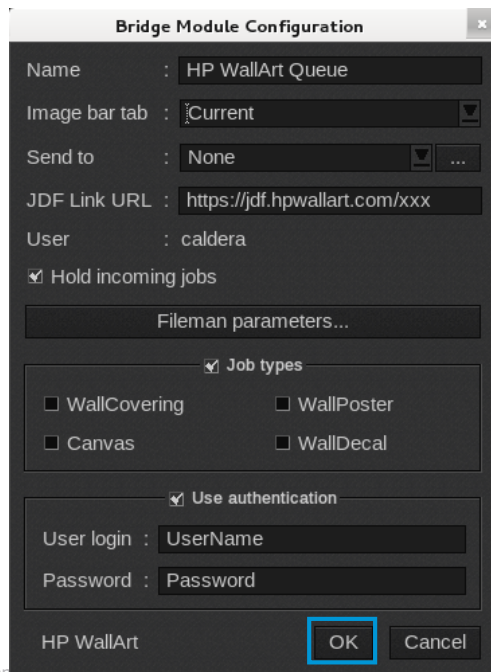
When “Job types” is disabled, no filtering is applied, which will load jobs of all types



# Set up HP WallArt in Caldera RIP

Only for Caldera Version 10

5 Confirm with OK button



Bridge Module Configuration

Name : HP WallArt Queue

Image bar tab : Current

Send to : None

JDF Link URL : https://jdf.hpwallart.com/xxx

User : caldera

Hold incoming jobs

Fileman parameters...

Job types

WallCovering  WallPoster

Canvas  WallDecal

Use authentication

User login : UserName

Password : Password

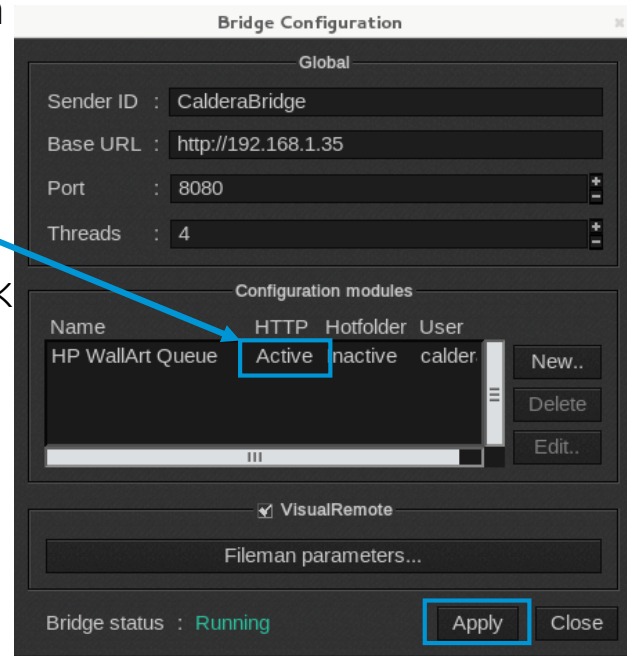
HP WallArt

# Set up HP WallArt in Caldera RIP

## Only for Caldera Version 10

- 6 Activate the module with **Apply** button

It should read "Active" for the HP WallArt module. Other messages are "Authentication denied" or "JDF Link problem". If any of those appear, check the configuration (repeat the steps above)

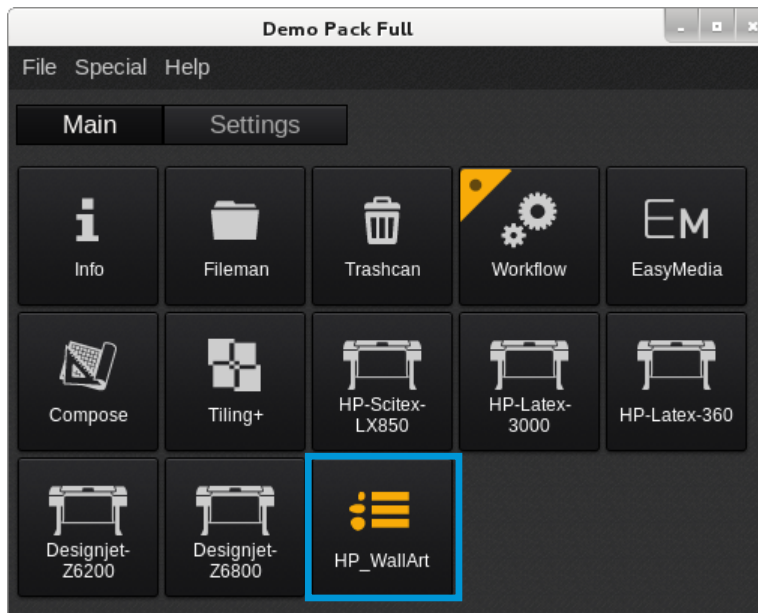




# Set up HP WallArt in Caldera RIP

## Only for Caldera Version 10

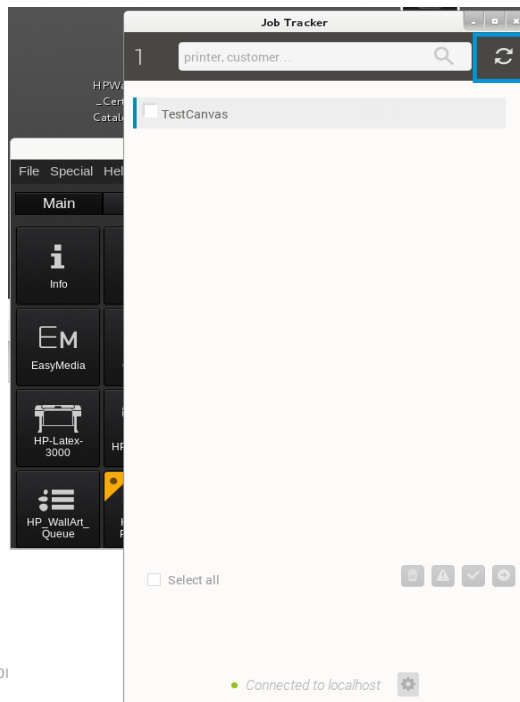
- 7 Restart Caldera V10 interface. There should be an icon with the same name as the new configuration module. That opens the Job Tracker



# Set up HP WallArt in Caldera RIP

## Only for Caldera Version 10

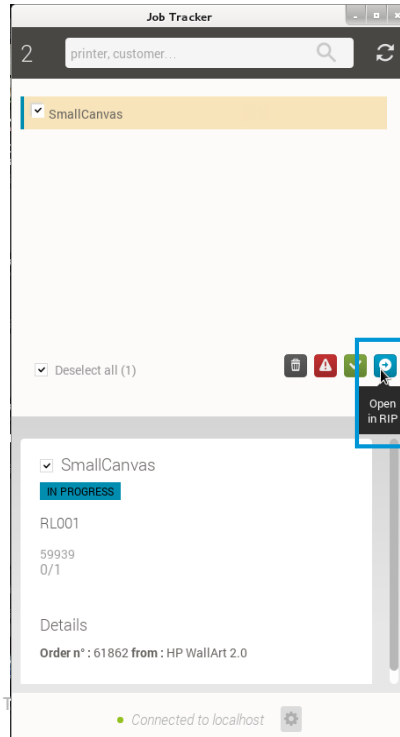
- 8 In Job Tracker, hit the refresh icon on top-right corner. That will retrieve any waiting HP WallArt job.



# Set up HP WallArt in Caldera RIP

## Only for Caldera Version 10

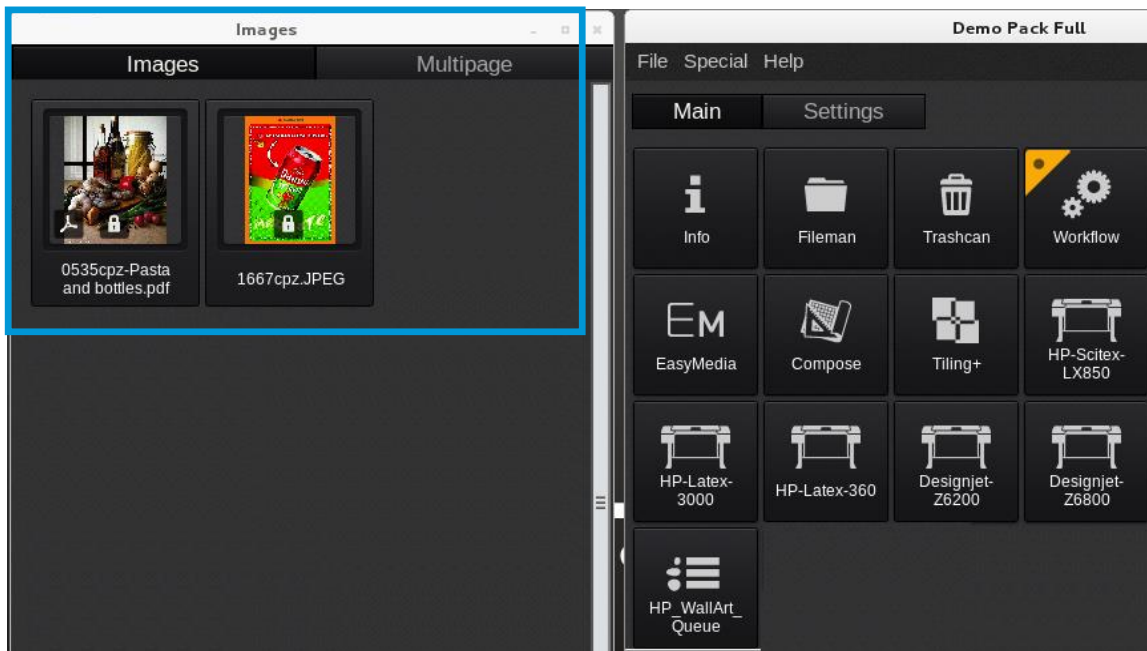
9 Select the job/jobs you want to download and click the blue button.



# Set up HP WallArt in Caldera RIP

Only for Caldera Version 10

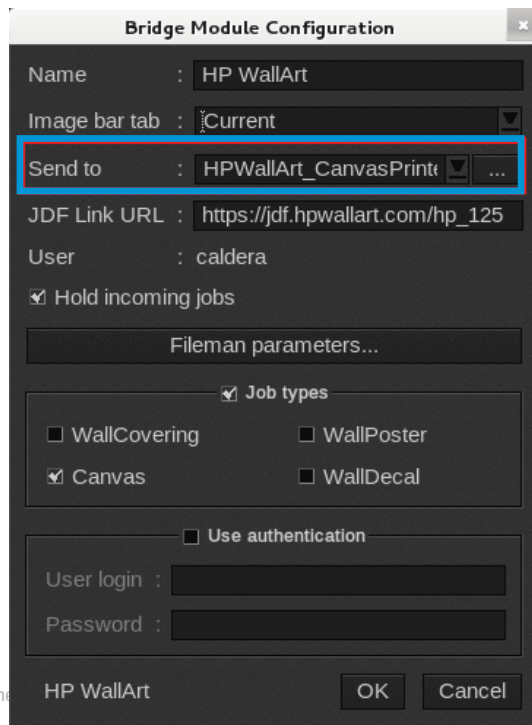
**10** The jobs will be downloaded to the RIP in the images area to be processed



# Set up HP WallArt in Caldera RIP

## Only for Caldera Version 10

- 11** The HP WallArt jobs could be sent directly to a created Workflow by selecting the “Send to” option



The screenshot shows the 'Bridge Module Configuration' dialog box for 'HP WallArt'. The 'Send to' field is highlighted with a red box and contains the value 'HPWallArt\_CanvasPrint'. Other fields include 'Name: HP WallArt', 'Image bar tab: Current', 'JDF Link URL: https://jdf.hpwallart.com/hp\_125', and 'User: caldera'. There are also checkboxes for 'Hold incoming jobs', 'Job types' (Canvas, WallCovering, WallPoster, WallDecal), and 'Use authentication'.

Name	: HP WallArt
Image bar tab	: Current
Send to	: HPWallArt_CanvasPrint
JDF Link URL	: https://jdf.hpwallart.com/hp_125
User	: caldera
<input checked="" type="checkbox"/> Hold incoming jobs	
Fileman parameters...	
<input checked="" type="checkbox"/> Job types	
<input type="checkbox"/> WallCovering	<input type="checkbox"/> WallPoster
<input checked="" type="checkbox"/> Canvas	<input type="checkbox"/> WallDecal
<input type="checkbox"/> Use authentication	
User login	: [ ]
Password	: [ ]
HP WallArt	
OK	Cancel

# Thank you

